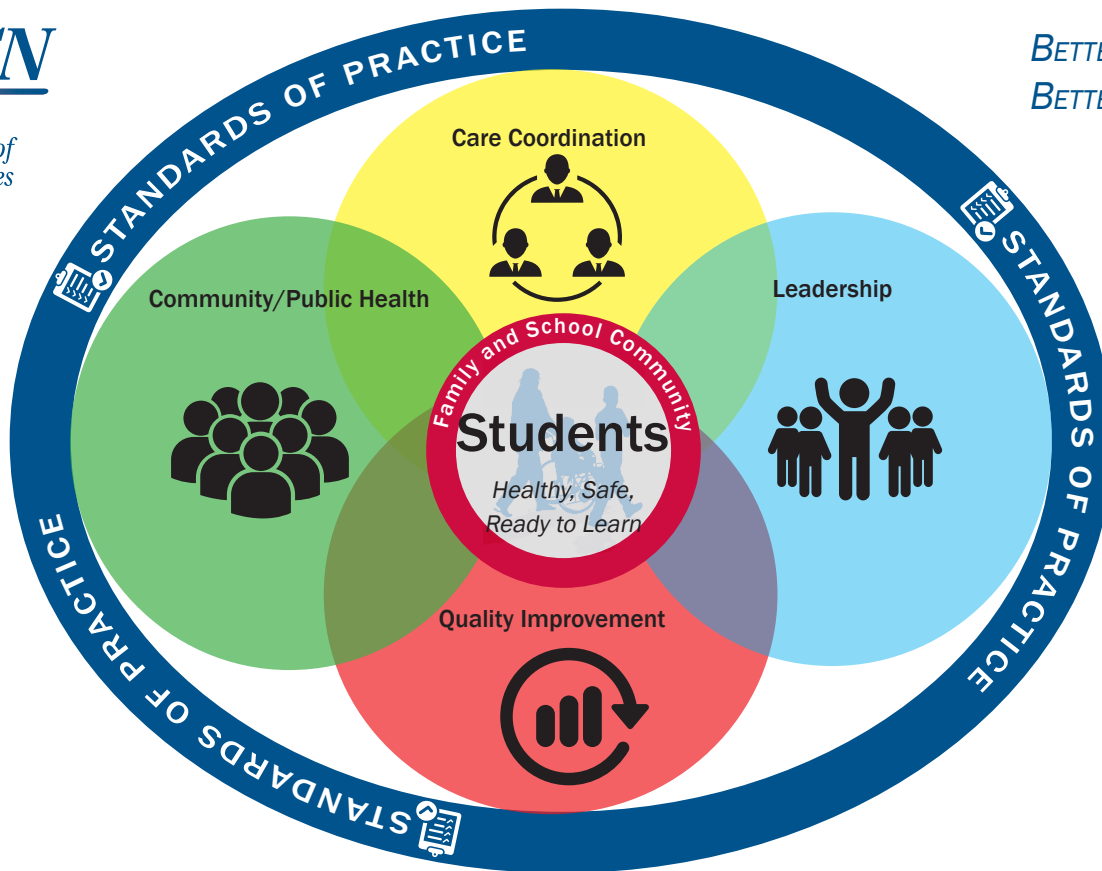







Framework for 21st Century School Nursing Practice™



BETTER HEALTH.
BETTER LEARNING.™



NASN's *Framework for 21st Century School Nursing Practice* (the *Framework*) provides structure and focus for the key principles and components of current day, evidence-based school nursing practice. It is aligned with the Whole School, Whole Community, Whole Child model that calls for a collaborative approach to learning and health (ASCD & CDC, 2014). Central to the *Framework* is student-centered nursing care that occurs within the context of the students' family and school community. Surrounding the students, family, and school community are the non-hierarchical, overlapping key principles of *Care Coordination*, *Leadership*, *Quality Improvement*, and *Community/Public Health*. These principles are surrounded by the fifth principle, *Standards of Practice*, which is foundational for evidence-based, clinically competent, quality care. School nurses daily use the skills outlined in the practice components of each principle to help students be healthy, safe, and ready to learn.

 <p>Standards of Practice</p> <ul style="list-style-type: none"> • Clinical Competence • Clinical Guidelines • Code of Ethics • Critical Thinking • Evidence-based Practice • NASN Position Statements • Nurse Practice Acts • Scope and Standards of Practice 	 <p>Care Coordination</p> <ul style="list-style-type: none"> • Case Management • Chronic Disease Management • Collaborative Communication • Direct Care • Education • Interdisciplinary Teams • Motivational Interviewing/ Counseling • Nursing Delegation • Student Care Plans • Student-centered Care • Student Self-empowerment • Transition Planning 	 <p>Leadership</p> <ul style="list-style-type: none"> • Advocacy • Change Agents • Education Reform • Funding and Reimbursement • Healthcare Reform • Lifelong Learner • Models of Practice • Technology • Policy Development and Implementation • Professionalism • Systems-level Leadership 	 <p>Quality Improvement</p> <ul style="list-style-type: none"> • Continuous Quality Improvement • Documentation/Data Collection • Evaluation • Meaningful Health/ Academic Outcomes • Performance Appraisal • Research • Uniform Data Set 	 <p>Community/ Public Health</p> <ul style="list-style-type: none"> • Access to Care • Cultural Competency • Disease Prevention • Environmental Health • Health Education • Health Equity • Healthy People 2020 • Health Promotion • Outreach • Population-based Care • Risk Reduction • Screenings/Referral/ Follow-up • Social Determinants of Health • Surveillance
---	--	--	---	--

ASCD & CDC. (2014). *Whole school whole community whole child: A collaborative approach to learning and health*. Retrieved from <http://www.ascd.org/ASCD/pdf/siteASCD/publications/wholechild/wssc-a-collaborative-approach.pdf>